

# 2 Pin Strip to Power Clamp Connector

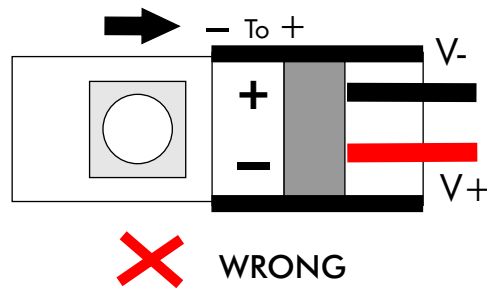
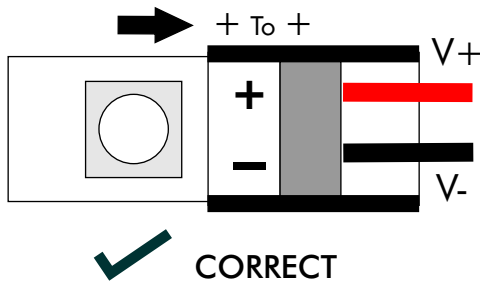
Model: CL10XB-2G

**CAUTION:** Max 5 Amps 12/24VDC (low voltage). Use only with 20 or 22 AWG UL/CSA wire. Use only with Class 2 power supply. Indoor dry location use.

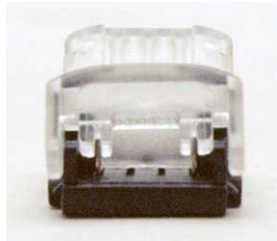
**ATTENTION:** Utiliser seulement avec la classe 2 bloc d'alimentation.

For use only with LED World's type A (IP20) 12VDC and 24VDC 10mm wide LED Flex Strips. Not to be used with Type B or C (Strips that have covers or coatings).

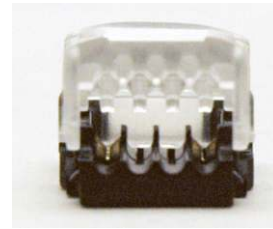
**Important Note:** Check the Polarity and make sure that connector contact points are directly over (and centered) the LED Flex Strip connector pads. Do not connect LED strips at soldered contact points.



## CONNECTOR ENDS

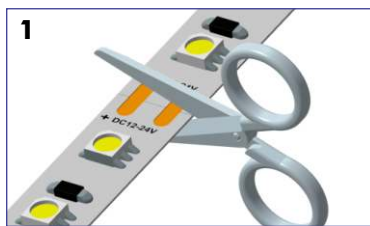


Strip Connection End

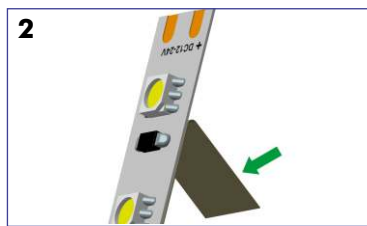


Wire Connection End

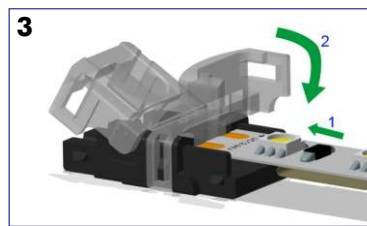
## INSTALLATION STEPS



1 Cut the LED Strip at the cut mark (pads)



2 Remove the wax paper from back of the LED Strip



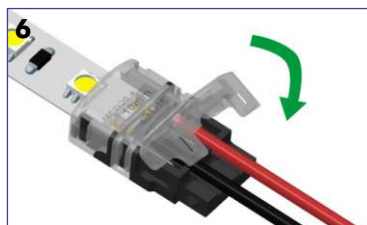
3 Push the LED Strip into contact points over pads. Close the cap gently



4 Complete the LED Strip connection using pliers. Make sure connection is locked at base of connector



5 Insert 20 or 22 AWG wires into wire holder side of the connector



6 Close the cap gently



7 Complete the connection using Pliers. Make sure cap is locked at base of connector



8 Test Connection